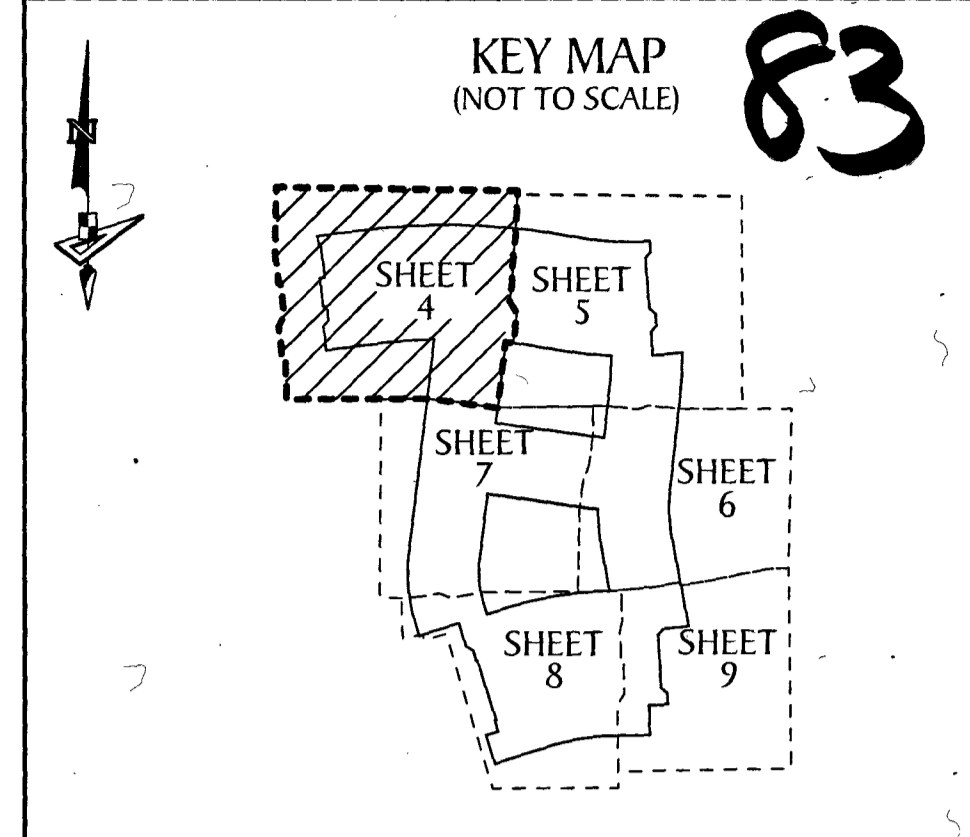
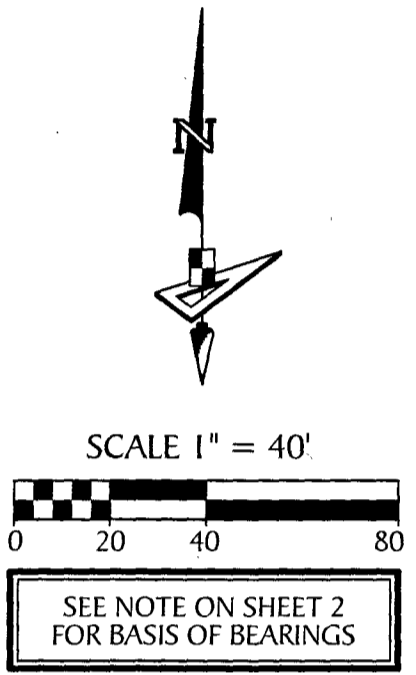


OAKS OF WESTLAKE - PHASE II

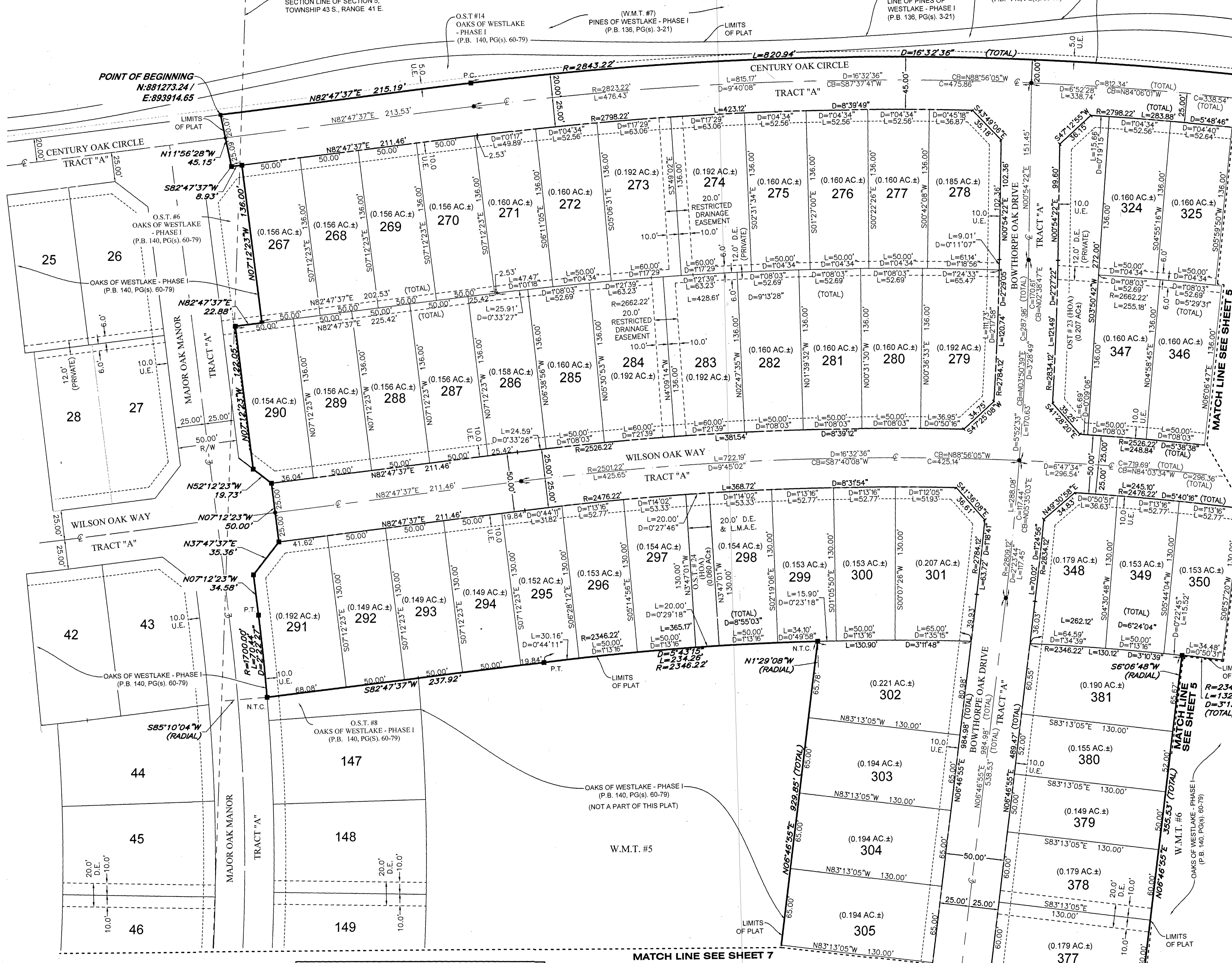
A SUBDIVISION IN SECTIONS 5 AND 8, TOWNSHIP 43 SOUTH, RANGE 41 EAST, CITY OF WESTLAKE, PALM BEACH COUNTY, FLORIDA, BEING A REPLAT OF A PORTION OF TRACT "U", OAKS OF WESTLAKE - PHASE I, PLAT BOOK 140, PAGES 60 - 79, INCLUSIVE, PUBLIC RECORDS OF PALM BEACH COUNTY, FLORIDA.



83



- LEGEND**
- P.O.B. --- POINT OF BEGINNING
 - P.O.C. --- POINT OF COMMENCEMENT
 - P.B. --- PLAT BOOK
 - D.B. --- DEED BOOK
 - O.R./O.R.B. --- OFFICIAL RECORDS BOOK
 - PG./PG(S) --- PAGE(S)
 - NAD --- NORTH AMERICAN DATUM
 - W.M.T. --- WATER MANAGEMENT TRACT
 - O.S.T. --- OPEN SPACE TRACT
 - P.B.C. --- PALM BEACH COUNTY
 - U.E. --- UTILITY EASEMENT
 - D.E. --- DRAINAGE EASEMENT
 - F.M.E. --- FORCE MAIN EASEMENT
 - L.M.A.E. --- LAKE MAINTENANCE ACCESS EASEMENT
 - 5-43-41 --- SECTION-TOWNSHIP-RANGE
 - R --- RADIUS
 - L --- ARC LENGTH
 - D --- DELTA ANGLE
 - CB --- CHORD BEARING
 - C --- CHORD
 - N.T.I. --- NON-TANGENT INTERSECTION
 - N.T.C. --- NON-TANGENT CURVATURE
 - P.C. --- POINT OF CURVATURE
 - P.T. --- POINT OF TANGENCY
 - C.C. --- COMPOUND CURVATURE
 - R.C. --- REVERSE CURVATURE
 - R.I. --- RADIAL INTERSECTION
 - R/W --- RIGHT-OF-WAY
 - ℄ --- CENTERLINE OF ROAD
 - (R) --- RADIAL
 - (NR) --- NON-RADIAL
 - AC±/AC.± --- ACRES
 - HOA --- HOMEOWNERS ASSOCIATION
 - SID/S.I.D. --- SEMINOLE IMPROVEMENT DISTRICT
 - PRM --- PERMANENT REFERENCE MONUMENT
 - --- PERMANENT CONTROL POINT
 - --- FOUND PERMANENT REFERENCE MONUMENT "PRM LB 7768"
 - --- SET 1/2" IRON ROD WITH PRM CAP STAMPED "PRM LB 7768"



NOTE:
ALL LINES THAT INTERSECT A CURVE THAT ARE NOT LABELED NON-RADIAL (NR) ARE RADIAL.